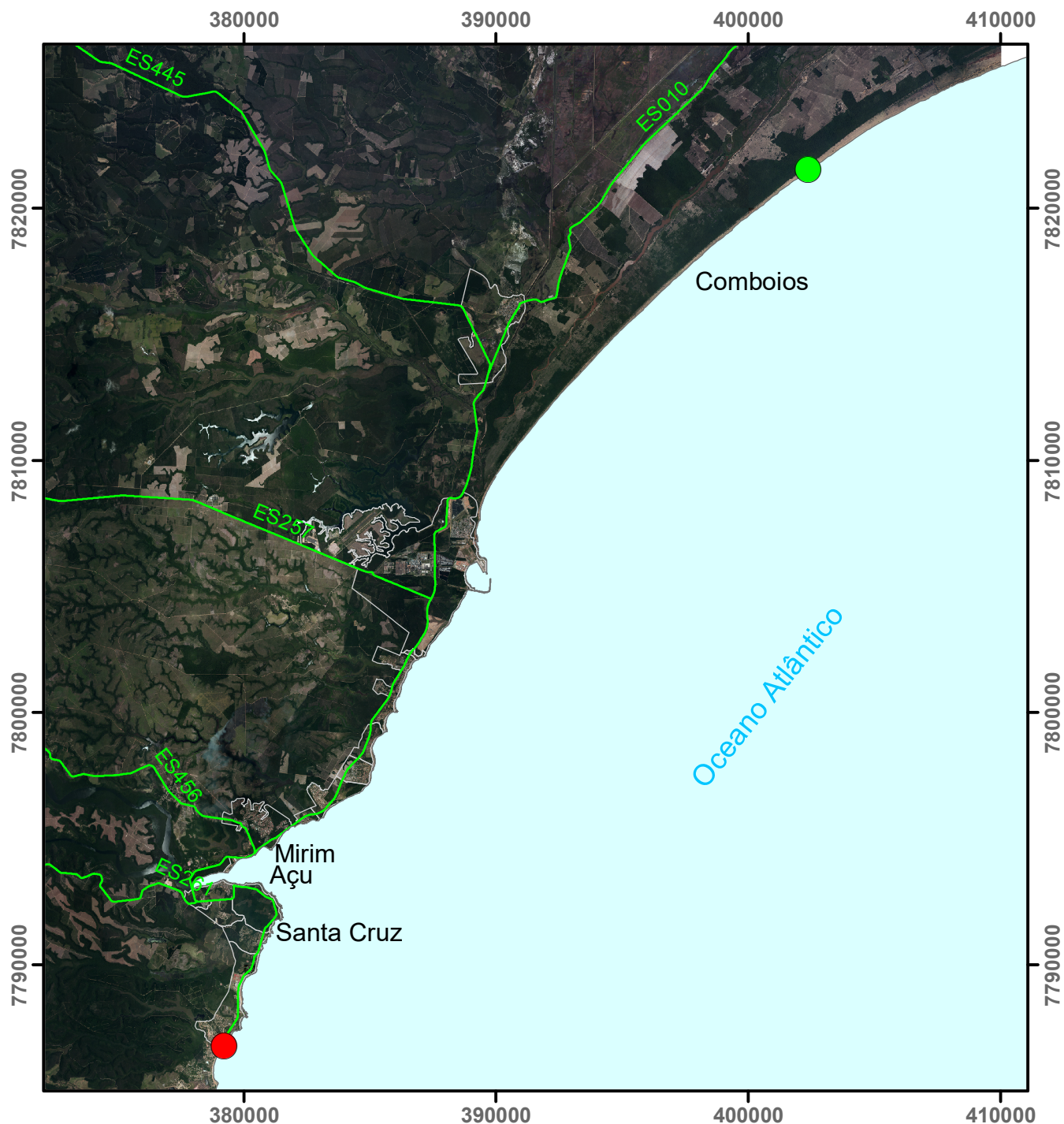
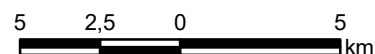






# ANEXO 5/5 - SETOR MARINHO



Sistema de Coordenadas UTM SIRGAS 2000, Zona 24S  
Fonte: SIMGEO/PMA



## Legenda

-  Início do Setor Marinho (coordenadas geográficas X: 402.381,87m / Y: 7.821.524,05m)
-  Fim do Setor Marinho (Coordenadas geográficas X: 379.220,75m / Y: 7.786.775,55mm)
-  Rodovias-ES
-  Bairros



Secretaria de  
Planejamento,  
Orçamento e Gestão

PREFEITURA  
**ARACRUZ**  
www.aracruz.es.gov.br

