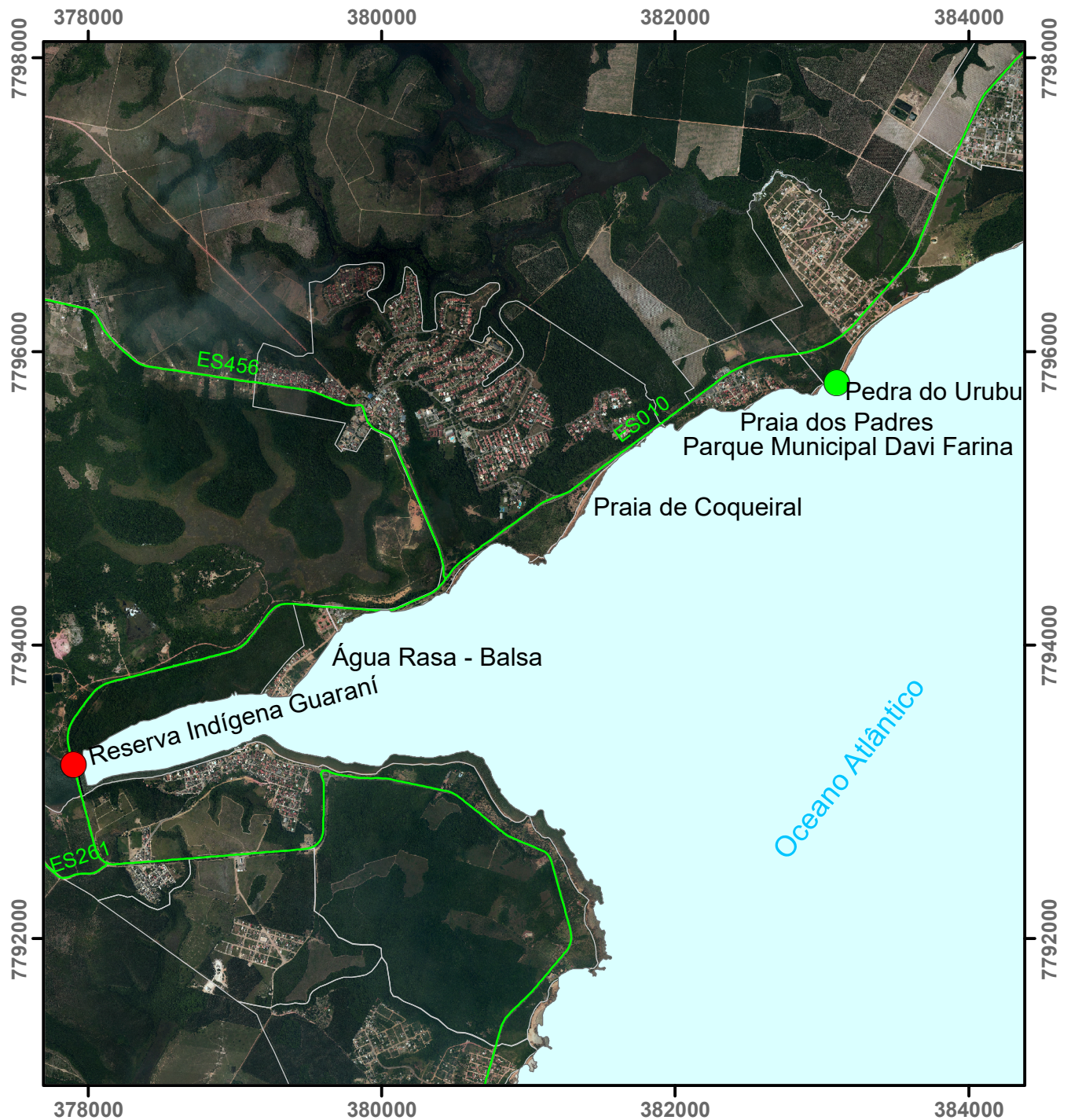
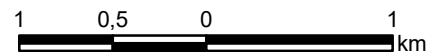






ANEXO 3/5 - SETOR COQUEIRAL



Sistema de Coordenadas UTM SIRGAS 2000, Zona 24S
Fonte: SIMGEO/PMA



Legenda

-  Início do Setor Coqueiral (Coordenadas geográficas X: 383.101,25m / Y: 7.795.786,22m)
-  Fim do Setor Coqueiral (Coordenadas geográficas X: 377.901,62m / Y: 7.793.185,30m)
-  Rodovias-ES
-  Bairros



Secretaria de
Planejamento,
Orçamento e Gestão
PREFEITURA
ARACRUZ
www.aracruz.es.gov.br

